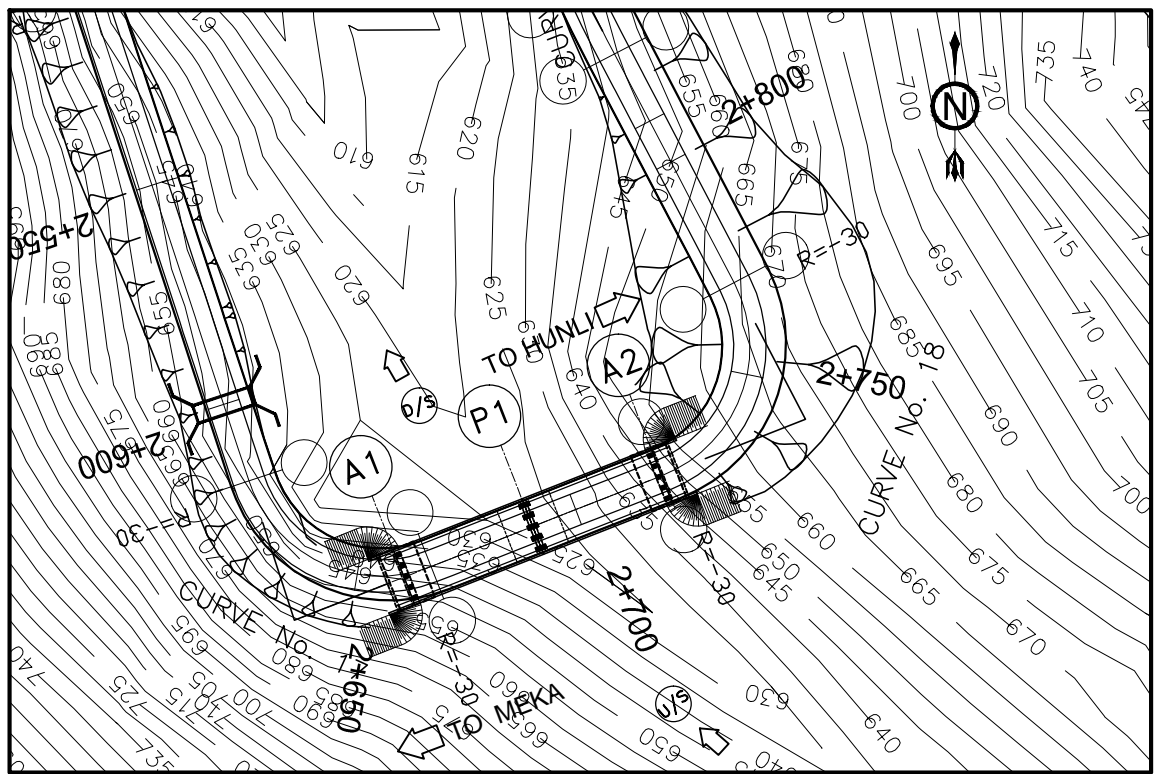


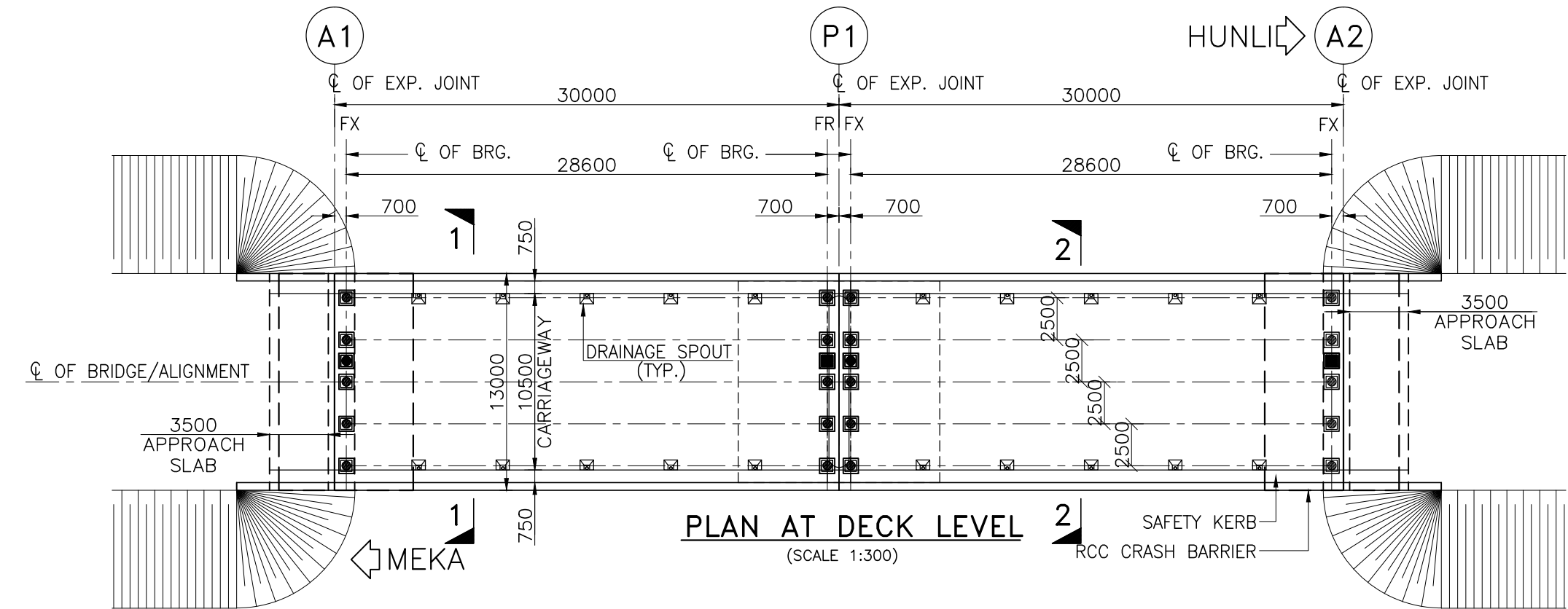
CHAINAGE IN (m)	-30	00+000	+30
FORMATION LEVEL (m)	640	640	640
BED LEVEL AT ϕ (m)	636.416	623.890	642.762

ELEVATION
(SCALE 1:300)

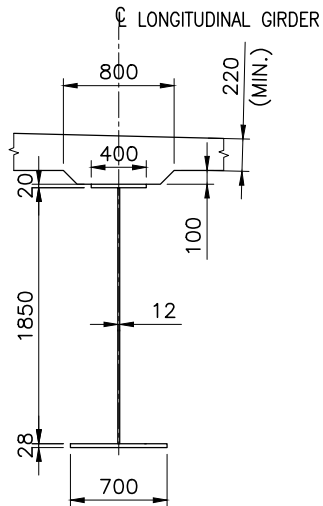
CENTER LINE SHOWN HERE AS 0,
SHOULD BE AT KM. 2+690



KEY PLAN
(SCALE- 1:1500)



PLAN AT DECK LEVEL
(SCALE 1:300)



DETAILS OF COMPOSITE GIRDER
(SCALE 1:50)

- NOTES :-**
- ALL DIMENSIONS ARE IN MILLIMETERS AND LEVELS ARE IN METERS UNLESS NOTED OTHERWISE. DIMENSIONS ARE NOT TO BE SCALED, ONLY WRITTEN DIMENSIONS ARE TO BE FOLLOWED.
 - FOR FORMATION LEVELS & SITING OF THE BRIDGE, RELEVANT HIGHWAY PLAN & PROFILE DRAWINGS TO BE REFERRED. IN CASE OF ANY VARIATION HIGHWAY DRAWINGS TO BE CONSIDERED CORRECT.
 - THIS DRAWING SHALL BE READ IN CONJUNCTION WITH OTHER RELEVANT DRAWINGS.



BORDER ROADS ORGANISATION



in JV with

Stanley Consultants Inc.

Unit No. 405 A & B, Rectangle I, Saket District Centre
Saket, New Delhi - 110 017

Detailed Project Report for Improvement of
Meka-Roing-Hunli Road to NH Double Lane
Specifications in Dibang District of
Arunachal Pradesh

REV	R0				
DATE	October 2012				
DRAWN					
DESIGNED					
CHECKED					
APPROVED					

Scale:	MEKA-ROING-HUNLI ROAD
	FINAL DETAILED PROJECT REPORT
	(PACKAGE RH / N3)
Sheet Size: A2	GENERAL ARRANGEMENT DRAWING OF MAJOR BRIDGE OVER BI NALA AT KM. 2+690
Drg No: Xplorer-SCI/BRO/11193/FDPR/MJBR/2+690/01 (SH-1 OF 2)	